

PALM

WALLCOVERING COLLECTION



G | P

NNATURAL PALM WALLCOVERINGS REFRESH
AND RESET ANY INTERIOR SPACE.

With a subtle shimmer, complemented by a distinctive raw texture, our wallcovering of Abaca and Palm fibers create a luminous series of 14 colorways. Our Palm series has long been admired for the quality of its hand-loomed, woven wallcovering panels. We expand this collection with nine new colorways, reminiscent of the hues of earthly and celestial delights.

COVER: Palm PLM-711 Mantra Shimmer
GIP Danois End Table, artwork by Miguel Ybanez

SHOWN: Palm PLM-711 Mantra Shimmer
sculpture by Brigit Piskor



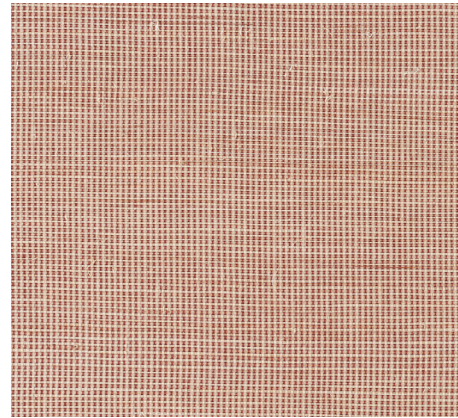


Palm, PLM-711 Mantra Shimmer
GregoriusPineo Arp Side Tables (bronze)

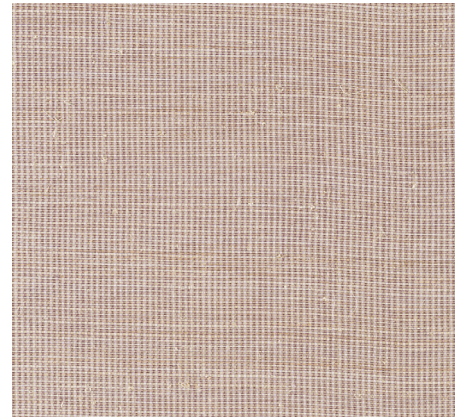
THE 'BEST OF THE BEST' PLANT FIBERS.

Artisans select the 'best of the best' plant fibers and then each strand is hand-knotted with another strand to create weaving yarns. Although time-consuming, this is our chosen way to assure the delicate beauty of Abaca and Palm fibers are preserved. It's an organic background surface that's certain to add dimension and light.

PALM READINGS OF COLOR AND TEXTURE



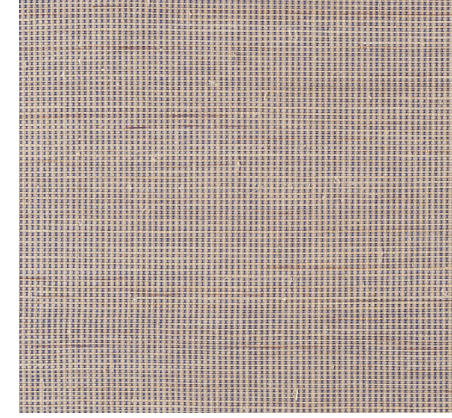
Earthly Fortune
PLM-705 *



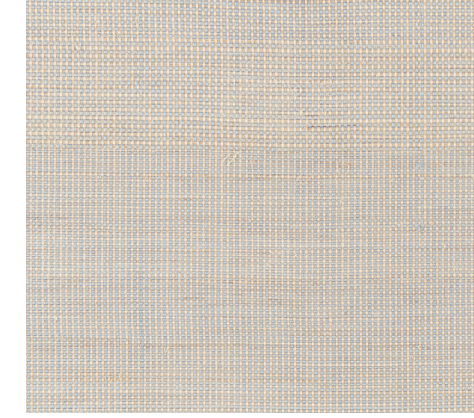
Ouija
PLM-706 *



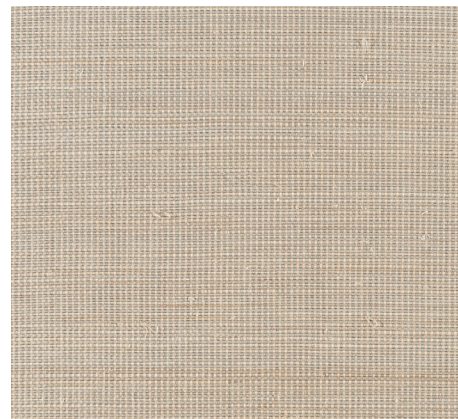
Moon Nude
PLM-707 *



Rune Blue
PLM-708 *



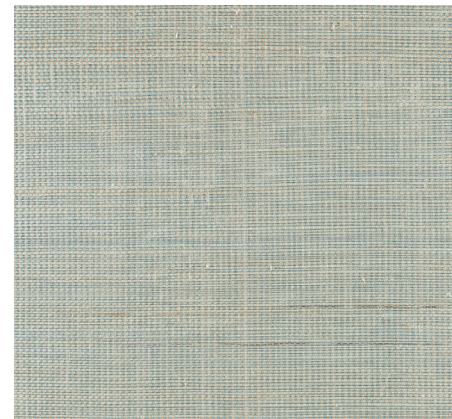
Day Star
PLM-709 *



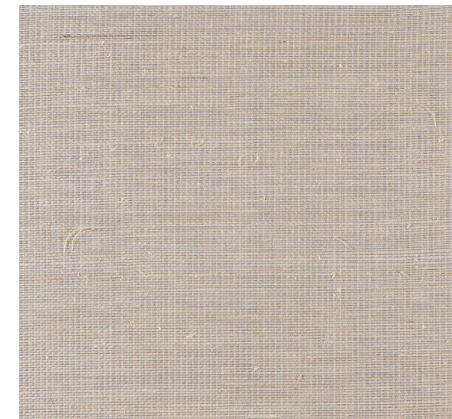
Slate of Hand
PLM-710 *



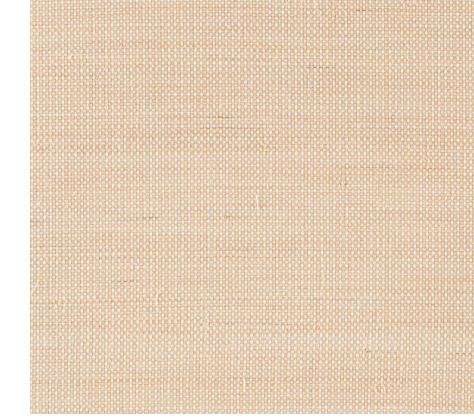
Mantra Shimmer
PLM-711 *



Crystal Seas
PLM-712 *



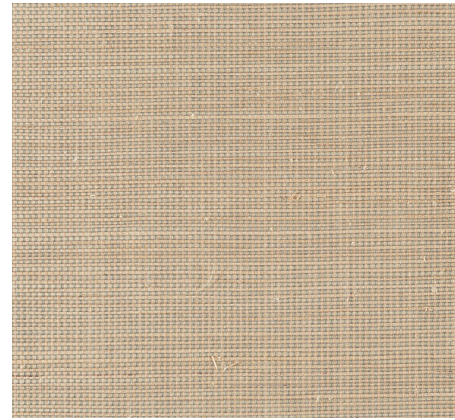
Moonstone
PLM-713 *



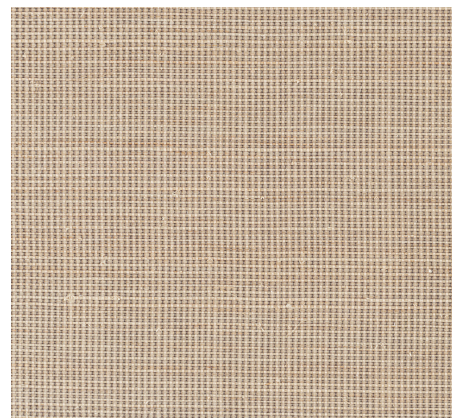
Cosmic Buff
PLM-700



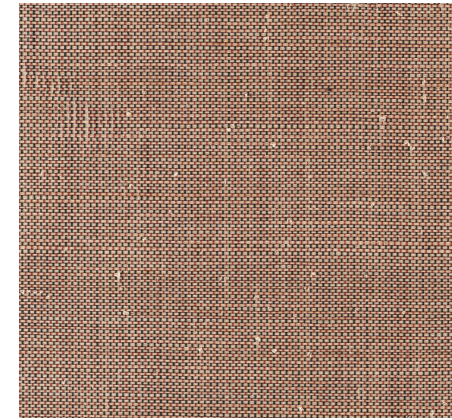
Tea Leaf
PLM-701



Enlighten
PLM-702



Khaki Mirage
PLM-703



Star Fire
PLM-704

With Gregorius|Pineo's Palms, you'll find a resource for refined textures & colors that bring dimension & illumination to any room.

For more details on our Palm Wallcovering Collection please visit gregoriuspineo.com

As always, our natural woven textures are environmentally friendly. The plant fibers used are renewable and sustainable, and of the highest grade. Color and texture variations are to be expected with natural fibers. 36" wide and sold in 10 foot panels.

Flammability Rating: ASTM E84 Class A

